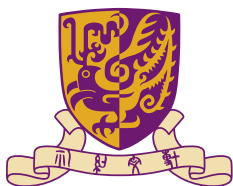
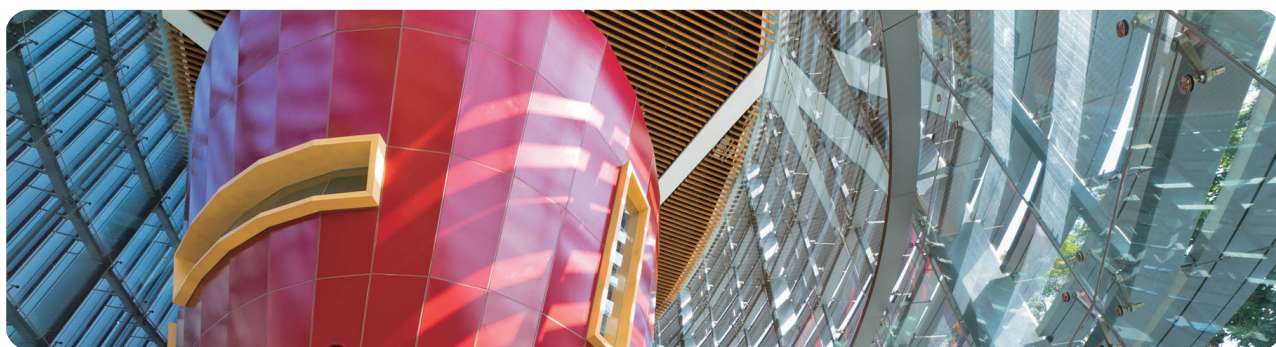


# POSTGRADUATE STUDIES 2020-21 RESEARCH PROGRAMMES

THE CHINESE UNIVERSITY OF HONG KONG



CUHK  
**GraduateSchool**  
香港中文大學研究院





# INTRODUCTION

The Chinese University of Hong Kong (CUHK) is a bilingual (Chinese and English) and multicultural institution of higher learning founded in 1963. As a first-class comprehensive research university with both a local and an international outlook, we aim at cultivating higher degree graduates to serve the increasingly sophisticated needs of the society and making contributions to the pool of human knowledge through top quality research. Our current enrolment of postgraduate students exceeds 12,000 and includes a substantial portion of non-local students from around the world.

The University's stunning campus commands panoramic views of the Tolo Harbour and the mountain ranges nearby. With a size of 137.3 hectare it is the largest university campus in Hong Kong. Nestled in the mountains greenery our University buildings feature an innovative mix of Chinese and Western architectural styles.

## MORE ABOUT CUHK

- ✓ No. 46 in the World<sup>1</sup>
- ✓ No. 9 in Asia<sup>2</sup>
- ✓ Top 50 in the World by Subject<sup>3</sup>
  - Accounting & Finance
  - Arts & Humanities
  - Business & Management Studies
  - Communication & Media Studies
  - Computer Science & Information Systems
  - Economics & Econometrics
  - Education & Training
  - Geography
  - History
  - Hospitality & Leisure Management
  - Law & Legal Studies
  - Linguistics
  - Mathematics
  - Medicine
  - Modern Languages
  - Nursing
  - Pharmacy & Pharmacology
  - Philosophy
  - Social Sciences & Management
  - Social Policy & Administration
  - Sociology
  - Sports-related Subjects
  - Theology, Divinity & Religious Studies

Source:

<sup>1</sup>QS World University Rankings 2020

<sup>2</sup>QS Asia University Rankings 2019

<sup>3</sup>QS World University Rankings by Subject 2019

# RESEARCH AT CUHK

CUHK strives to be a world-class university recognized as a centre of excellence for developing cutting-edge research and emerging interdisciplinary strengths that have global impact and make significant contributions to society. CUHK offers a wide range of research postgraduate programmes in different subject areas. CUHK encourages all academic staff to undertake consultancy and collaborative projects with the industry. Research activities at CUHK address core issues of global innovation, they integrate staff research with teaching, and they range from upstream research to midstream development.

## Research Excellence

CUHK is committed to research excellence. Our academic staff members are research-active and benchmark their research against the highest international standards. CUHK has had four faculty members who are Nobel Laureates: late Professor Sir Charles Kao, Nobel Laureate in Physics who was also one of the University's former Vice-Chancellors; Professor Yang Chen Ning, Nobel Laureate in Physics; Professor Robert Mundell and late Professor Sir James Mirrlees, both Nobel Laureates in Economics.

## Four Major Research Areas

The CUHK Strategic Plan 2016 identified four major areas for strategic research and substantial resources are being devoted to these areas. The four major areas are:

- China Studies
- Translational Biomedicine
- Information and Automation Technology
- Environment and Sustainability

# STUDENTSHIPS, SCHOLARSHIPS & ACCOMMODATION

## Hong Kong PhD Fellowship Scheme

Established by the Research Grants Council (RGC) in 2009, the Hong Kong PhD Fellowship Scheme (HKPFS) aims at attracting the best and brightest students in the world to pursue their PhD programmes in Hong Kong's universities. HKPFS is a prestigious scheme which provides a monthly stipend of HK\$25,800 (approx. US\$3,300) and a conference travel allowance of HK\$12,900 (approx. US\$1,655) per year to awardees for a maximum period of three years.

Those who are seeking admission as new full-time PhD students in Hong Kong universities funded by the University Grants Committee (UGC), irrespective of their country of origin, prior work experience and ethnic background, are eligible to apply. Applicants should demonstrate outstanding qualities in terms of academic excellence, research ability/potential, communication and interpersonal skills, as well as leadership abilities.

Starting from the 2019-20 intake, the CUHK Vice-Chancellor HKPFS Scholarship offers HKPFS awardees a tuition fee waiver for their whole normative study period. For awardees with a normative study period of four years, CUHK will offer the studentship and conference travel allowance at the same level for the fourth year. It also provides an award of HK\$20,000 (approx. US\$2,570) for lodging in the first year of study to HKPFS awardees. The on-campus hostel fee will be waived in the first year of study. CUHK guarantees on-campus accommodation during the normative study period to HKPFS awardees who submit timely applications.

In lieu of the CUHK Vice-Chancellor HKPFS Scholarship, a tuition waiver will be provided to local HKPFS awardees during their normative study period under the Tuition Waiver Scheme for Local Research Postgraduate Students administered by UGC.

**HKPFS application deadline: 2 December 2019**

## Postgraduate Studentships/Scholarships

CUHK offers Postgraduate Studentships (PGS) for up to 2 years to all full-time MPhil students and for up to 4 years to all full-time PhD students. The PGS for 2019-20 is HK\$17,330 (approx. US\$2,220) per month.

A number of scholarships and funding schemes are available to support full-time MPhil and PhD students to conduct overseas academic activities such as presenting papers at international conferences, conducting field trips and engaging in data collection projects.

## Tuition Waiver Scheme for Local Research Postgraduate Students

Starting from the 2018-19 academic year, the Government has been granting a tuition waiver to all current and newly admitted local full-time research postgraduate (RPG) students enrolled in UGC-funded RPG programmes for their entire normative study period.

## Accommodation

CUHK's Postgraduate Halls (PGH) offer over 1,500 hostel places on-campus to full-time research students at a very affordable rate. Please visit the PGH website at [www.pgh.cuhk.edu.hk](http://www.pgh.cuhk.edu.hk) for more information.

The following research postgraduate programmes are offered in the 2020-21 academic year:

DIVISION	PROGRAMME
<b>FACULTY OF ARTS</b>	
<i>Anthropology</i>	MPhil in Anthropology PhD in Anthropology
<i>China Studies</i>	MPhil in Chinese Studies PhD in Chinese Studies
<i>Chinese Language and Literature</i>	MPhil in Chinese Language and Literature PhD in Chinese Language and Literature
<i>Cultural Studies</i>	MPhil-PhD in Cultural Studies
<i>English</i>	MPhil in English (Applied English Linguistics) PhD in English (Applied English Linguistics) MPhil in English (Literary Studies) PhD in English (Literary Studies)
<i>Fine Arts</i>	Master of Fine Arts MPhil-PhD in History of Chinese Art
<i>History</i>	MPhil in History PhD in History
<i>Japanese Studies</i>	MPhil-PhD in Japanese Studies
<i>Linguistics</i>	MPhil-PhD in Linguistics
<i>Music</i>	Doctor of Music Master of Music MPhil in Music PhD in Music
<i>Philosophy</i>	MPhil in Philosophy PhD in Philosophy
<i>Religious Studies</i>	MPhil-PhD in Religious Studies
<i>Translation</i>	MPhil in Translation PhD in Translation
<b>FACULTY OF BUSINESS ADMINISTRATION</b>	
<i>Business Administration</i>	MPhil-PhD in Accountancy MPhil-PhD in Business Administration MPhil-PhD in Decision Sciences and Managerial Economics MPhil-PhD in Finance (PhD stream only) MPhil-PhD in Management MPhil-PhD in Marketing
<b>FACULTY OF EDUCATION</b>	
<i>Education</i>	MPhil in Education PhD in Education MPhil in Sports Science and Physical Education
<b>FACULTY OF ENGINEERING</b>	
<i>Biomedical Engineering</i>	MPhil-PhD in Biomedical Engineering
<i>Computer Science and Engineering</i>	MPhil-PhD in Computer Science and Engineering
<i>Electronic Engineering</i>	MPhil-PhD in Electronic Engineering
<i>Information Engineering</i>	MPhil-PhD in Information Engineering
<i>Mechanical and Automation Engineering</i>	MPhil-PhD in Mechanical and Automation Engineering
<i>Systems Engineering and Engineering Management</i>	MPhil-PhD in Systems Engineering and Engineering Management
<b>FACULTY OF LAW</b>	
<i>Law</i>	MPhil in Laws PhD in Laws
<b>FACULTY OF MEDICINE</b>	
<i>Anaesthesia and Intensive Care</i>	MPhil in Anaesthesia and Intensive Care PhD in Anaesthesia and Intensive Care
<i>Anatomical and Cellular Pathology</i>	MPhil in Anatomical and Cellular Pathology PhD in Anatomical and Cellular Pathology
<i>Biomedical Sciences</i>	MPhil-PhD in Biomedical Sciences
<i>Chemical Pathology</i>	MPhil in Chemical Pathology PhD in Chemical Pathology

DIVISION	PROGRAMME
<b>FACULTY OF MEDICINE (CON'T)</b>	
<i>Chinese Medicine</i>	MPhil in Chinese Medicine PhD in Chinese Medicine
<i>Imaging and Interventional Radiology</i>	MPhil in Imaging and Interventional Radiology PhD in Imaging and Interventional Radiology
<i>Medical Sciences</i>	MPhil in Medical Sciences PhD in Medical Sciences
<i>Microbiology</i>	MPhil in Microbiology PhD in Microbiology
<i>Nursing</i>	MPhil-PhD in Nursing
<i>Obstetrics and Gynaecology</i>	MPhil in Obstetrics and Gynaecology PhD in Obstetrics and Gynaecology
<i>Ophthalmology and Visual Sciences</i>	MPhil in Ophthalmology and Visual Sciences PhD in Ophthalmology and Visual Sciences
<i>Orthopaedics and Traumatology</i>	MPhil in Orthopaedics and Traumatology PhD in Orthopaedics and Traumatology
<i>Pharmacy</i>	MPhil in Pharmacy PhD in Pharmacy
<i>Public Health</i>	MPhil-PhD in Public Health
<i>Surgery</i>	MPhil in Surgery PhD in Surgery
<b>FACULTY OF SCIENCE</b>	
<i>Chemistry</i>	MPhil-PhD in Chemistry
<i>Earth and Atmospheric Sciences</i>	MPhil-PhD in Earth and Atmospheric Sciences
<i>Life Sciences</i>	MPhil-PhD in Biochemistry MPhil-PhD in Biology MPhil-PhD in Cell and Molecular Biology MPhil-PhD in Environmental Science MPhil-PhD in Food and Nutritional Sciences MPhil-PhD in Molecular Biotechnology
<i>Materials Science and Engineering</i>	MPhil-PhD in Materials Science and Engineering
<i>Mathematics</i>	MPhil-PhD in Mathematics
<i>Physics</i>	MPhil-PhD in Physics
<i>Risk Management Science</i>	MPhil in Risk Management Science
<i>Statistics</i>	MPhil-PhD in Statistics
<b>FACULTY OF SOCIAL SCIENCE</b>	
<i>Architecture</i>	MPhil-PhD in Architecture
<i>Communication</i>	MPhil in Communication PhD in Communication
<i>Economics</i>	MPhil-PhD in Economics
<i>Geography and Resource Management</i>	MPhil-PhD in Geography and Resource Management
<i>Government and Public Administration</i>	MPhil-PhD in Government and Public Administration
<i>Psychology</i>	MPhil-PhD in Industrial-Organizational Psychology MPhil-PhD in Psychology PhD in Clinical Psychology
<i>Social Work</i>	MPhil-PhD in Social Welfare
<i>Sociology</i>	MPhil-PhD in Sociology
<b>INTER-FACULTY PROGRAMMES</b>	
<i>Earth System and GeoInformation Science</i>	MPhil-PhD in Earth System and GeoInformation Science
<i>Gender Studies</i>	MPhil in Gender Studies PhD in Gender Studies

The University reserves the right to suspend admission of a programme without prior notice.

For programme details and application deadlines, please visit [www.gs.cuhk.edu.hk/admissions](http://www.gs.cuhk.edu.hk/admissions).





# STUDY OPTIONS

Our research postgraduate programmes consist of coursework and research components. Students need to submit a written research thesis and pass an oral examination for graduation.

DEGREE	STUDY MODE	NORMATIVE PERIOD	MAXIMUM PERIOD
<b>Doctor of Philosophy (PhD), Doctor of Music (DMus)</b>			
(i) For students with a research master's degree*	Full-time	36 months	84 months
	Part-time	48 months	96 months
(ii) For students without a research master's degree*	Full-time	48 months	84 months
	Part-time	64 months	96 months
<b>Doctor of Philosophy (MPhil-PhD articulated programmes)</b>			
(i) For students with a research master's degree*	Full-time	36 months	72 months
	Part-time	48 months	84 months
(ii) For students without a research master's degree*	Full-time	48 months	84 months
	Part-time	64 months	100 months
<b>Master of Philosophy (MPhil)</b>			
	Full-time	2 years	4 years
	Part-time	3 years	5 years
<b>Master of Music (MMus)</b>			
	Full-time	1 year	3 years
	Part-time	2 years	4 years
<b>Master of Fine Arts (MFA)</b>			
	Full-time	2 years	4 years

The annual tuition fee for all research postgraduate programmes, regardless of the mode of study, is HK\$42,100<sup>^</sup> for the 2020-21 academic year.

\* The University reserves absolute discretion to decide whether the degree possessed by a student is a research master's degree or not, such decision is to be communicated through the admission notification.

<sup>^</sup> Subject to review.



# ADMISSIONS REQUIREMENTS

The information provided below is for reference only. Please refer to the admissions website for details.

## General Admissions Requirements

- (a) For Master's and MPhil-PhD articulated programmes:
  - A bachelor's degree from a recognized university, normally with honours not lower than second class; or
  - A bachelor's degree from an honours programme of a recognized university, normally with an average grade of not lower than "B".
- (b) For Doctor of Music and non-articulated PhD programmes:
  - A master's degree from a recognized university.

## English Language Requirements for Admission

- (a) A degree from a university in Hong Kong or a degree programme of which the medium of instruction was English; or
- (b) Scores in the following English Language tests<sup>#</sup>:
  - TOEFL: 550 (paper-based)/79 (internet-based);
  - IELTS (Academic): 6.5;
  - GMAT: Band 21 (Verbal); or
- (c) A pass grade in English in one of the following examinations: HKALE (AS Level), HKHLE, CUHK Matriculation Examination, GCE A-Level/AS-Level; or
- (d) Level 4 or above in the English Language subject of the Hong Kong Diploma of Secondary Education Examination; or
- (e) A recognized professional qualification, provided that the examination was conducted in English.

## Programme-specific Admissions Requirements (if any)

<sup>#</sup> TOEFL and IELTS are considered valid for 2 years from the test date. GMAT is considered valid for 5 years from the test date. Some programmes may have a higher score requirement. Please refer to the relevant programme website for details.



# APPLICATION PROCEDURES

---

Applicants must submit their application online. Please visit our admissions website for details about the application procedures and deadlines.

## CONTACT US

---

### Graduate School, The Chinese University of Hong Kong



7th Floor, Yasumoto International Academic Park,  
The Chinese University of Hong Kong, Shatin, Hong Kong



[www.gs.cuhk.edu.hk/admissions](http://www.gs.cuhk.edu.hk/admissions)



香港中文大學  
The Chinese University of Hong Kong